

*Sunshine Terrace was originally built in the Sherlock Park area in 1971. It was a six-story brick 65-unit complex, which included one-bedroom and efficiency units.*

*This area was devastated during the flood of 1997. The entire Sherlock Park area has been cleared and will be part of the Greenway project and State Recreation Area.*

*Plans for a replacement building for Sunshine Terrace were initiated shortly after the 1997 flood, and a new Sunshine Terrace complex will be completed in May 2002.*

*The new building was designed with a three-story center and two-story wings on either side, and is located in an area adjacent to downtown East Grand Forks.*

## SUNSHINE TERRACE APARTMENTS



615 Sherlock Parkway NW  
East Grand Forks, MN 56721  
218-773-0771

**OFFICE HOURS:**  
8:00 AM to 12:00 PM  
Monday through Friday

Sunshine Terrace is located adjacent to the downtown business district of East Grand Forks and is within walking distance of the Campbell library, medical and dental facilities, Riverwalk Centre Mall, Cabela's and several restaurants.

Sunshine Terrace is for individuals who are age 55 and older, including those with disabilities.

Home delivered meals are also available through the East Grand Forks Senior Center.

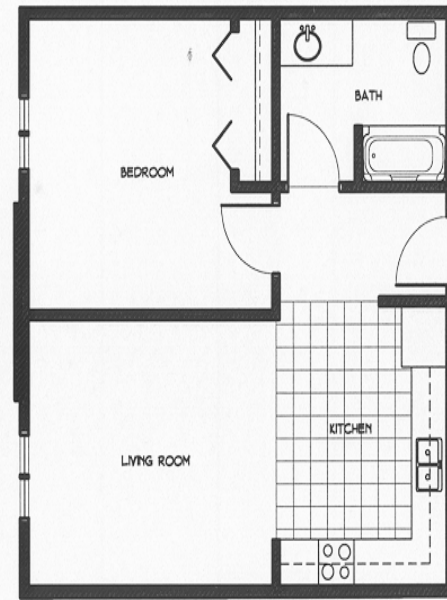
A Community Room is available for use by all tenants for social activities.

Tenants have formed a Tenants Committee, which plan activities such as bingo, card parties, potlucks and coffee parties.

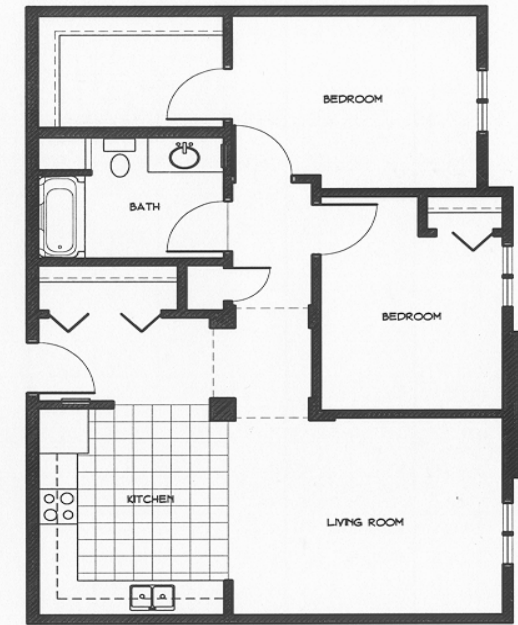
Sunshine Terrace is located conveniently on the City Bus Route.

Amenities include:

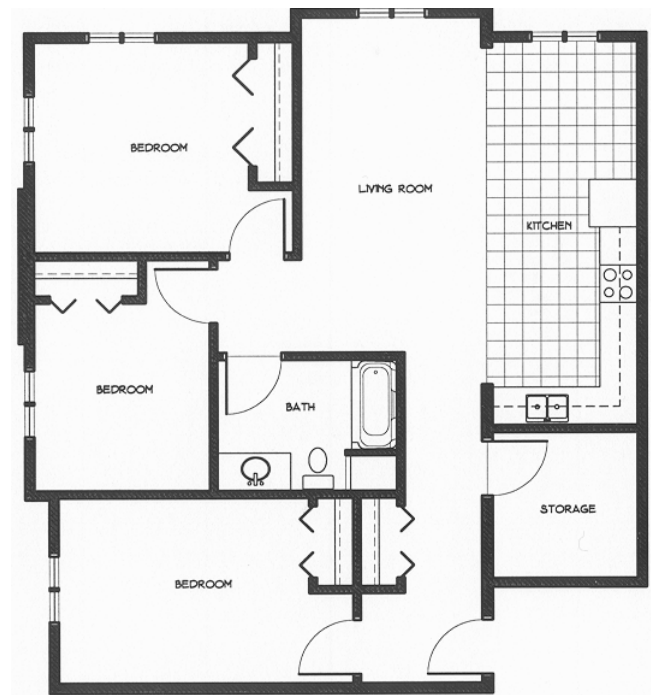
- ❖ Spacious 1,2 and 3 bedroom units
- ❖ 4-handicap accessible units
- ❖ Security – Intercom Entry System
- ❖ Custom mini blinds
- ❖ Air-Conditioning in each unit
- ❖ Community/Dining Room
- ❖ Dishwasher (Non Handicapped)
- ❖ Garbage disposal
- ❖ Large laundry facility
- ❖ On-site Caretaker



Typical One Bedroom



Typical Two Bedroom



Typical Three Bedroom